

INTEGRAL SHEET LOWBAY LUMINAIRE

APPLICATIONS

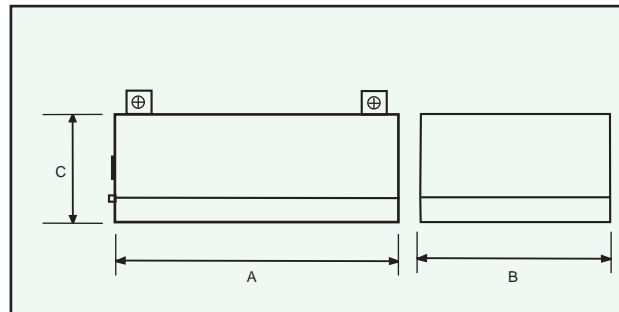
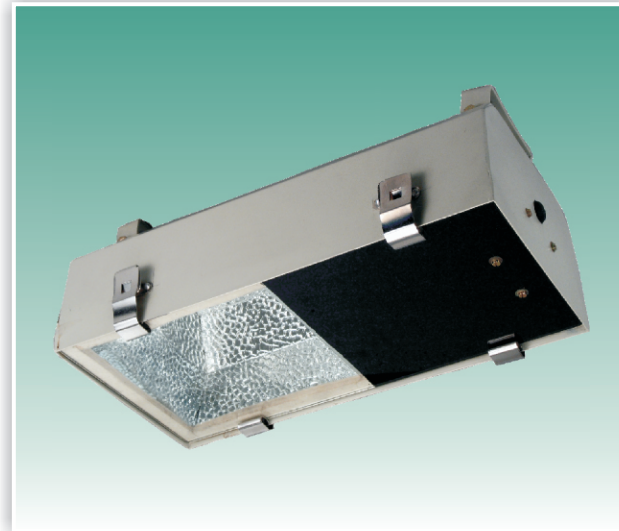
- Railway platforms
- Storage areas
- Loading bays
- Parking/Sport halls
- Cargo


CONSTRUCTION

- CRCA sheet housing, felt gasket, heat resistant & toughened glass cover fitted with copper wound ballast, PF correction capacitor and electronic ignitor (for SV/MH version only) are prewired upto terminal block.
- Epoxy powder coated painting.
- Stainless steel toggles & M.S. bracket for suspension.
- Lamp holder base GES E-27/3 Pin BC skirted porcelain / RX7s 24 with silver contacts.
- Earthing terminal.

REFLECTOR

- Electrochemically brightened and high purity anodised aluminium hammered finish reflector provides excellent light distribution.



ELECTRICAL DATA & DIMENSIONS									IP-54	
Cat. Ref.	Lamp			Nominal or Rated Voltage (V)	Mains current (A)	Dimensions (mm)			App. Wt. (Kgs)	Std. Pkg. (Nos.)
	Type	No.	Wattage			A	B	C		
 NML-N-80	HPMV	1	80	220/240	0.45	395	197	115	4.1	4
NML-N-125	HPMV	1	125	220/240	0.70	395	197	115	4.4	4
NSL-N-70	HPSV	1	70	220/240	0.45	395	197	115	4.5	4
NMHL-N-70	MH	1	70	220/240	0.45	395	197	115	4.5	4
NMHL-N-150	MH	1	150	220/240	0.85	395	197	115	5.4	2

Data subject to change due to improvement in design

Sales Office :- C-33, East of Kailash, New Delhi-110065, Tel.: 011-26842693 Fax : 91-11-26842693

Photometric Centre:- 142 A/1, NSEZ, NOIDA

Works :- 136, Industrial Area, Malanpur, (Ghirongi) Distt. Bhand, (MP)